



Release Management Approach

BT Release Management Overview

- Following the successful implementation of Stage 1 (START for GST), the programme has determined that taking a release based approach will ensure that on going implementation of the new tax and social policy changes are:
 - logically sequenced;
 - grouped to enable efficient use of resources; and
 - business and technical risk are minimised.
- The programme is comprised of 4 Stages with the final stage due to complete in 2021
- Applying a release based approach means that each Stage will now be delivered in one or more releases
- A BT Release may be either a START major release which will include all the necessary components to build out “end to end” the new tax and social policy solution (START Plus); or
- A START minor release which could include enhancements to existing functionality or new functionality; or
- An independent release of supporting business or technical change that could include Organisation Model Implementation, IKM, Analytics, Customer Experience or technology infrastructure.

BT Release Sequencing and Planning Approach

The following principles are taken into consideration when shaping the release scope and implementation sequence for the BT Programme:

- Risk minimisation – business and technical
- Ability to implement in the required time frame (do ability – size of release)
- **START Plus major releases** will be scheduled to align to an appropriate time frame based on the tax type affected
- **START minor releases** will be implemented to compliment the START solution and will be either pre or post a major START release
- **Independent releases** will be implemented at appropriate times aligned to business requirements taking into consideration START Major release windows
- Business impact – allowing sufficient time between releases for change to “bed in”
- Policy change considerations (timing of legislative change)
- Aligned to achievement of benefits as early as possible
- Enablement of the new organisation
- Affordability

The BT Programme Release Plan will be reviewed at the conclusion of each major release (or at least yearly) to ensure that the sequence remains relevant.

BT Release Sequencing and Planning Approach

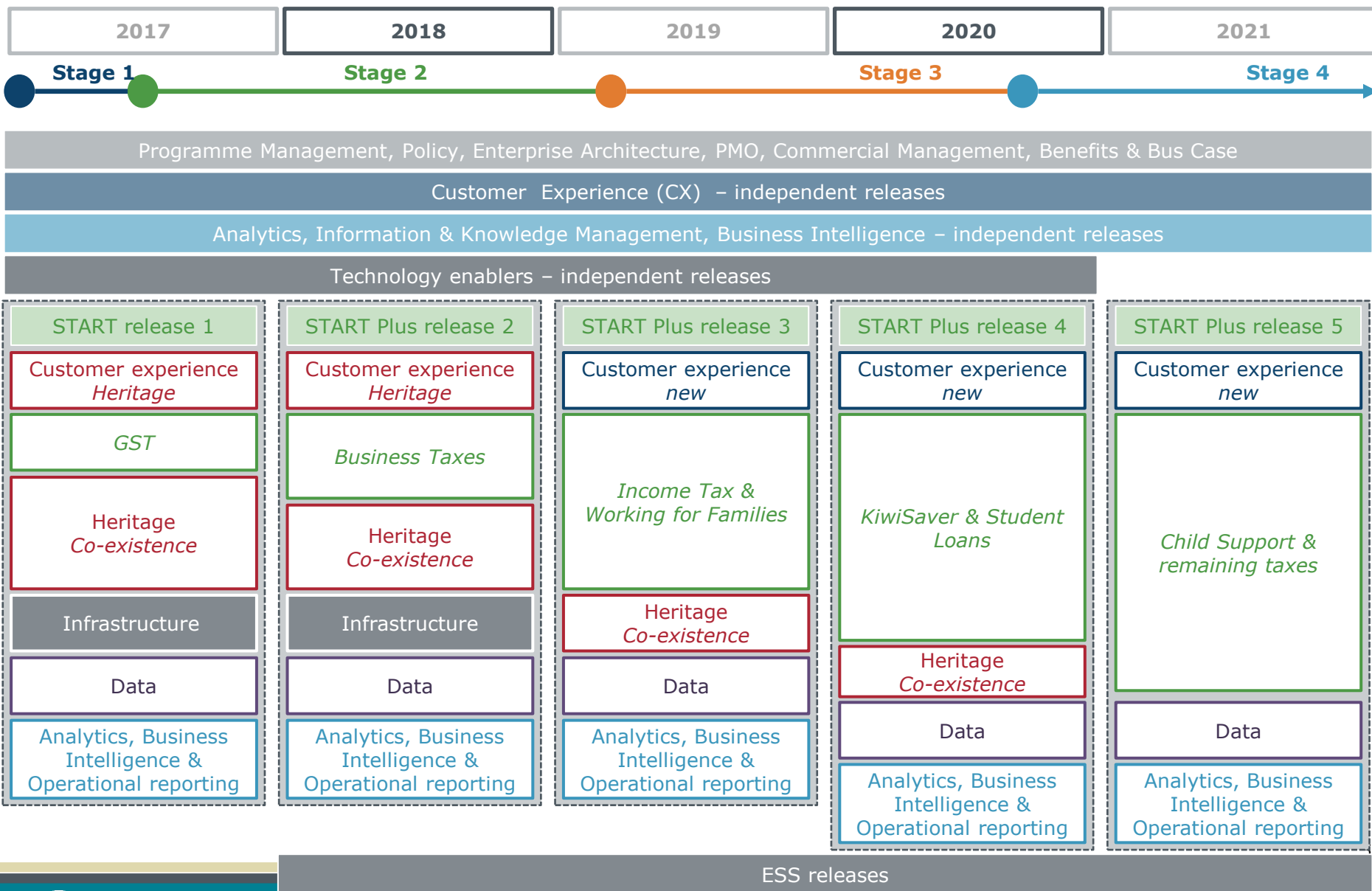
As the delivery of the START solution progresses and the START footprint grows and replaces FIRST then:

- The delivery model will become increasingly START centric, less waterfall and increasingly agile
- Changes to Customer Experience (CX) and Business Intelligence will compliment the START solution (START Plus)
- Co-existence (old solutions with new) will continue to be minimised and at the time of implementing START Plus Release 5 is expected to disappear altogether
- Independent releases of supporting change can continue in the later stages of the programme, however this will likely focus on enhancing customer experience

Modernising the revenue system requires wide-ranging change

IN CONFIDENCE - EXTERNAL RELEASE

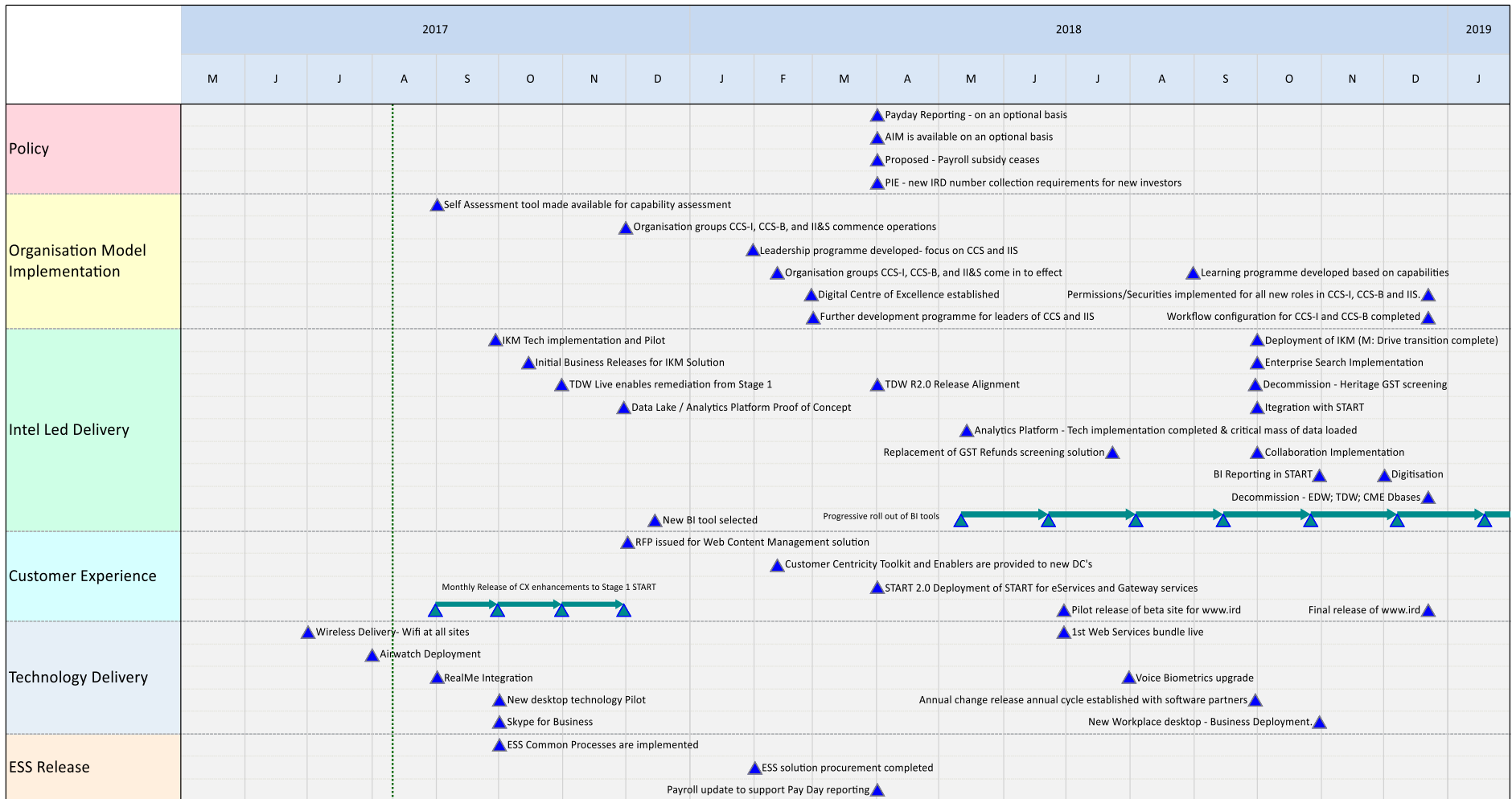
Delivery Model



Operating model (organisation design implementation)

High Level Block Plan 2017 - 2018

IN CONFIDENCE - EXTERNAL RELEASE

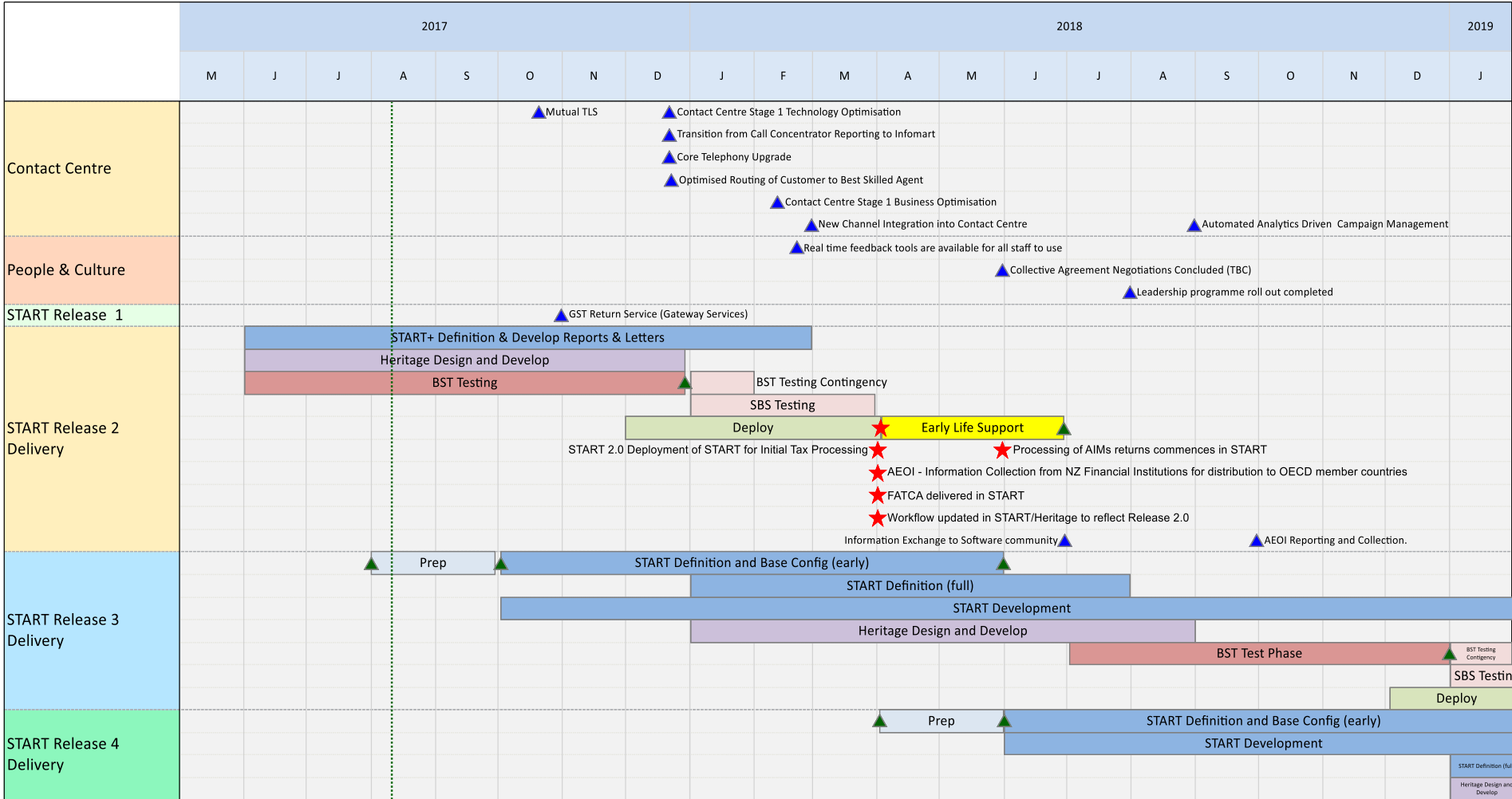


START Plus Release 3 Scope Overview

- START Plus Release 3 will enable:
 - End to End Income Tax within START, including associated products, e.g. Imputation credits etc.
 - Digital submissions of pre-populated Income Tax Returns.
 - Improved self service for Income Tax, including digital submission of Returns
 - Pay Day submission of Employer information (voluntary for Release 2 becomes compulsory from Release 3)
 - Working for Families Tax Credit year end square up (linked to Income Tax return process) in START
 - All Customers will be mastered in START
 - eServices becomes the digital landing page for all Customers
 - Consolidated view in myIR (eServices) for non individual customers, and individual customers with no Social policy products.
 - Enrolment for all Tax products consolidated in START

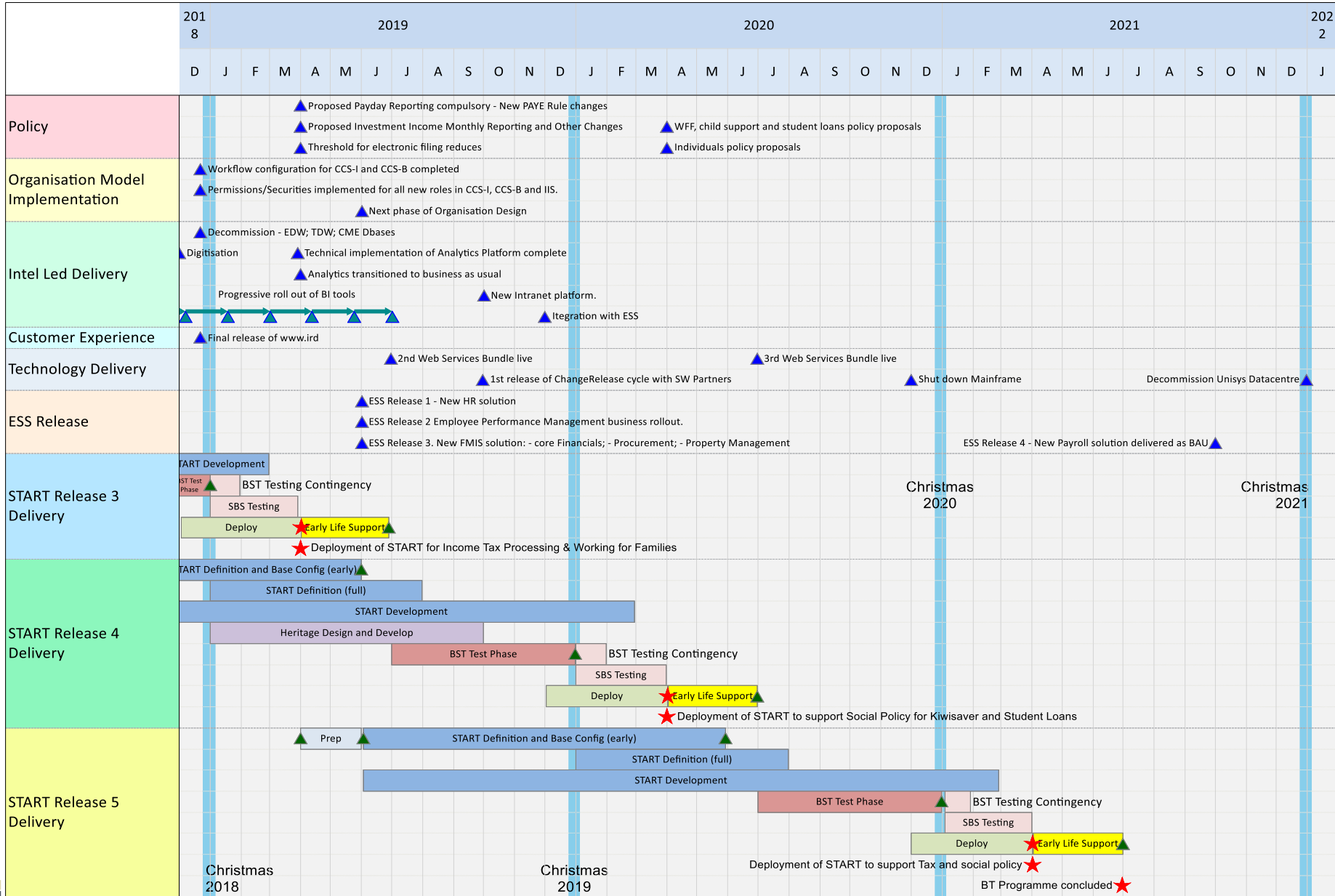
High Level Block Plan 2017 - 2018

IN CONFIDENCE - EXTERNAL RELEASE



High Level Block Plan 2019 - 2021

IN CONFIDENCE - EXTERNAL RELEASE



BT Release Management Meeting : Roles and Responsibilities

The existing Core Leads Meeting to transition to the Release Management Forum for the BT programme as follows:

- **Core Members**
 - Approve release scope and plan, associated priority and any changes (as a starting point then escalated to the appropriate governance forum for approval)
 - Approve schedule, resources, financials and any changes
 - Provide escalation point for issues related to each release
 - Assist Release Management Team with resolution of escalated issues
 - Accept or decline risks and associated mitigations
 - Provides PROCEED direction at key milestones
- **Chair**
 - As for members and governs the meeting proceedings
- **Support**
 - Provides sufficient and necessary information regarding
 - Scope, status, timelines (critical path focus) and financials
 - Escalates issues as necessary
 - Presents risks and associated mitigations for approval

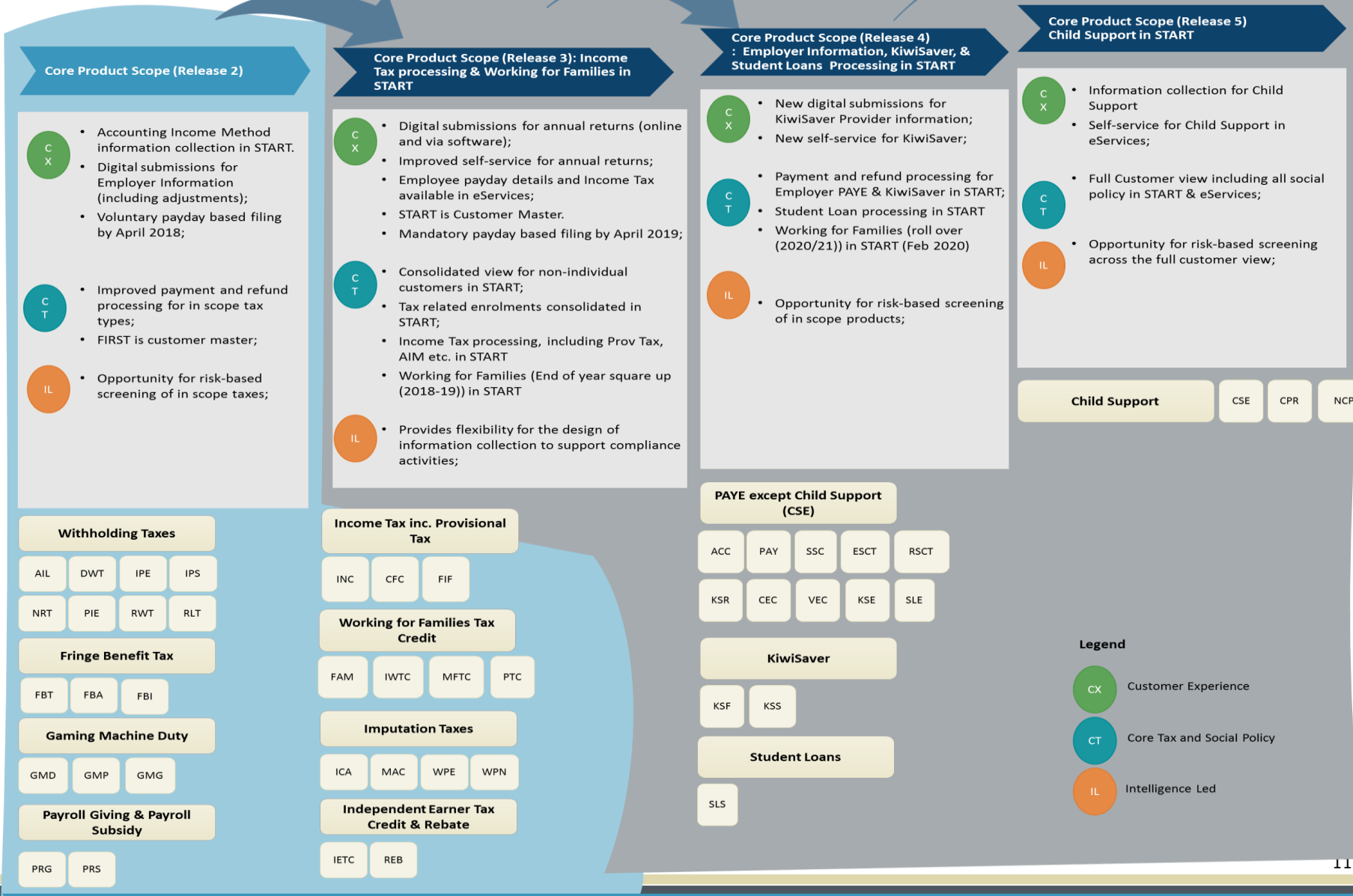
START+ Release (Product Scope per Release)

IN CONFIDENCE - EXTERNAL RELEASE

Important Consideration: Each group must be done sequentially

Key Highlights

Product Scope



Core Product Scope (Release 2)

- CX**
 - Accounting Income Method information collection in START.
 - Digital submissions for Employer Information (including adjustments);
 - Voluntary payday based filing by April 2018;
- CT**
 - Improved payment and refund processing for in scope tax types;
 - FIRST is customer master;
- IL**
 - Opportunity for risk-based screening of in scope taxes;

Core Product Scope (Release 3): Income Tax processing & Working for Families in START

- CX**
 - Digital submissions for annual returns (online and via software);
 - Improved self-service for annual returns;
 - Employee payday details and Income Tax available in eServices;
 - START is Customer Master.
 - Mandatory payday based filing by April 2019;
- CT**
 - Consolidated view for non-individual customers in START;
 - Tax related enrolments consolidated in START;
 - Income Tax processing, including Prov Tax, AIM etc. in START
 - Working for Families (End of year square up (2018-19)) in START
- IL**
 - Provides flexibility for the design of information collection to support compliance activities;

Core Product Scope (Release 4) : Employer Information, KiwiSaver, & Student Loans Processing in START

- CX**
 - New digital submissions for KiwiSaver Provider information;
 - New self-service for KiwiSaver;
- CT**
 - Payment and refund processing for Employer PAYE & KiwiSaver in START;
 - Student Loan processing in START
 - Working for Families (roll over (2020/21)) in START (Feb 2020)
- IL**
 - Opportunity for risk-based screening of in scope products;

Core Product Scope (Release 5) Child Support in START

- CX**
 - Information collection for Child Support
 - Self-service for Child Support in eServices;
- CT**
 - Full Customer view including all social policy in START & eServices;
- IL**
 - Opportunity for risk-based screening across the full customer view;

Withholding Taxes

AIL DWT IPE IPS
NRT PIE RWL RLT

Fringe Benefit Tax

FBT FBA FBI

Gaming Machine Duty

GMD GMP GMG

Payroll Giving & Payroll Subsidy

PRG PRS

Income Tax inc. Provisional Tax

INC CFC FIF

Working for Families Tax Credit

FAM IWTC MFTC PTC

Imputation Taxes

ICA MAC WPE WPN

Independent Earner Tax Credit & Rebate

IETC REB

PAYE except Child Support (CSE)

ACC PAY SSC ESCT RSCT
KSR CEC VEC KSE SLE

KiwiSaver

KSF KSS

Student Loans

SLS

Child Support CSE CPR NCP

Legend

- CX** Customer Experience
- CT** Core Tax and Social Policy
- IL** Intelligence Led

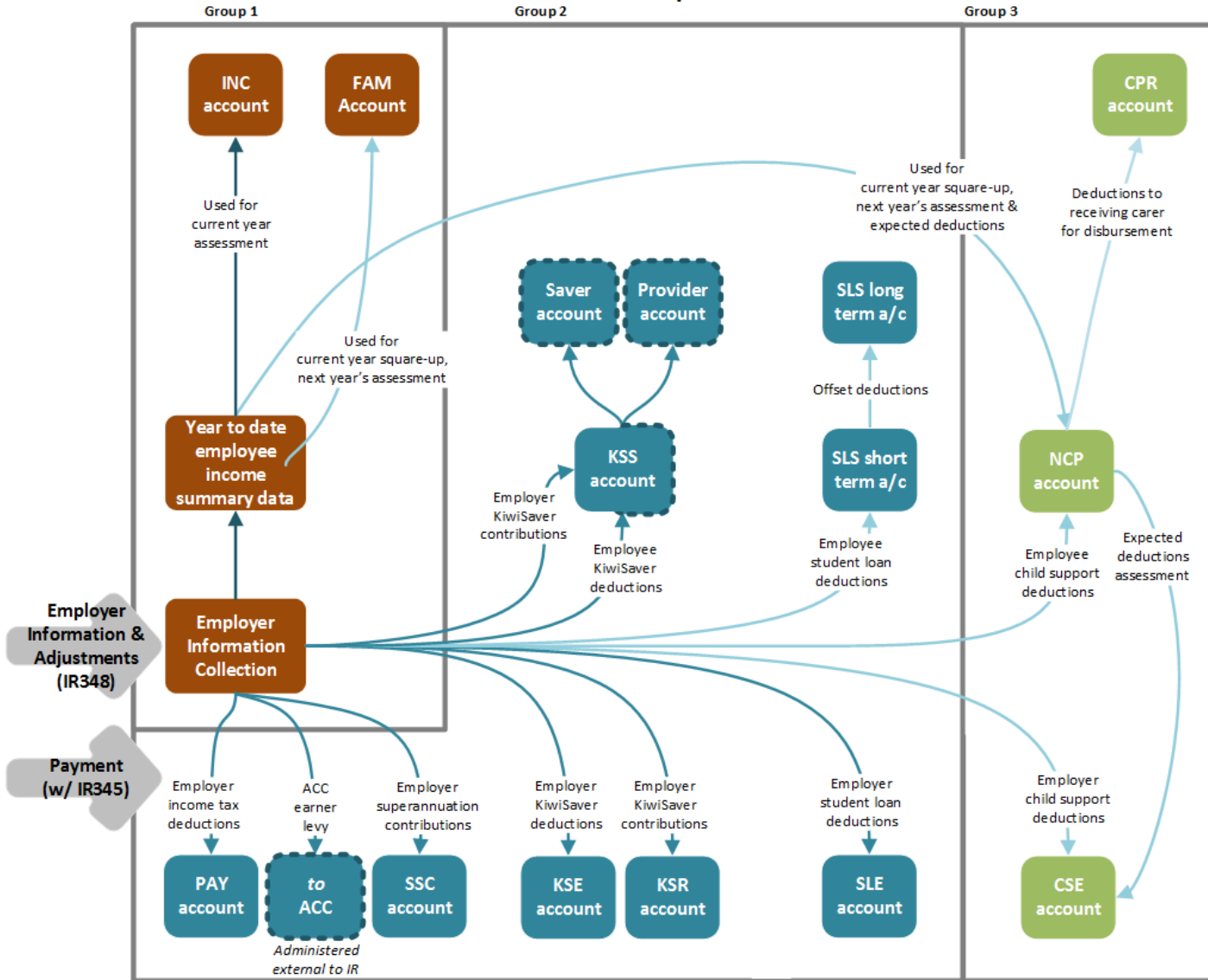
Core Product Scope

* The product based scope contained in this diagram, is limited to the scope that is delivered through core START and associated solutions (START+). It is expected that other key solution components contribute to the overall outcomes for the full Programme, e.g. Analytics, IKM, Workplace etc.

Logical High-Level EMS Groupings

Group 1 = Release 3;
Group 2 = Release 4;
Group 3 = Release 5.

IN CONFIDENCE - EXTERNAL RELEASE



INC - Income Tax (inc. Provisional Tax)
FAM - Working for Families
PAY - Pay as you Earn Inc Deds.
ACC - Employee ACC Deds.
SSC - Specified Superannuation Cont.
KSE - KiwiSaver Employee Deds.
KSR - KiwiSaver Employer Cont.
SLE - Student Loan Employee Deds.
KSS - KiwiSaver Account
SLS - Student Loan Annual Account
CSE - Child Support Employee Deds.
NCP - Child Support Paying Parent
CPR - Child Support Receiving Carer

- Logical EMS Groupings**
- Group 1:** Digital submission of Employer Information & Year to Date income summary data mastered in START;
 - Group 2:** KiwiSaver, Student Loans & Employer Information processing (except Child Support) in START;
 - Group 3:** Child Support in START;

The guiding principle in defining these logical groupings is to enable collection of Employer Information to be developed in START holistically and minimise co-existence complexity;

Non-FIRST tax type